

Coin-Operated Pool Table

Model: CX-800



General

The CX-800 Smart Pool Table Control System integrated with a coin acceptor for coin recognition, telemetry system for coin operated tables, suitable for operator, business owner, group business, remote area, international operation, business operator can stay in office or home to control and collect income from global wide.

The CX-800 Smart Pool Table Control System bundle coin validation in which the core value is experienced by coin discrimination technology, and GSM control board into a control panel as a sub-unit, and then, mounted on the pool table for playing game.

The CX-800 allows to connect with the CX-801 PMD for data configuration intending to meet customer requirement & application on demands. The factory default to be set per each unit on demand allowing to be compatible with other terminal device, such as motor, printer, and GSM report for remote managing (NEXUS S/F-options).

Main Feature

The CX-800 main feature summary is listed below.

- Set pay rate by minutes or games.
- Happy hour pricing.
- Door opened & cash box removed alarm.
- Power on self testing as system initiated.
- Multi coin and token (optional) acceptance.
- Field programmability of validation and controller.
- Play game mode selectable. (auto play or manual playing)
- LCD display credit & remaining time,
- Battery power low warning.
- Buzzer alarm for failure appearing
- Motor or solenoid operation.
- Cam position input for precise motor stop position.(N.C. Type)
- Mechanical counter Interface.
- Real time clock.
- Total coin amount & game accumulators.
- System performance is available by observing the LED.
System function fault ----- LED flashing in red.
Free game proceeding ---- LED flashing in blue.
- Error messages shown on LCD.
- Alarm report by means of text message/SMS sending.
- Capable of exporting information over GSM Network.

Options

Work for all settings and configuration by connecting PMD, or running RSM software on PC based, with much flexibility as possible, allowing managing a lot of pool tables at remote.

- To set the price of play through PMD or RMS.
- To set happy hour through PMD or RMS.
- To print out revenue list through PMD or RMS.
- RMS (Remote Management System) supported by GSM network.

RMS (Remote Management System)

- Security password Authorize System.
- PC/Mobile Web browser interface.
- GSM data On-line communication.
- To set up pool table venue detail, address or machine ID.
- Play mode select (per games or time mode)
- Price settings (Regular, Happy hours 1, ... Happy hours 6)
- Game period settings. (Free, Happy Hour Time)
- Amount in cash box (piece & value)
- Failure alarm Report
- Play Data Record Report
- Customize Statistics Report
- Auto short message to mobile phone alert obstacle, cash box status

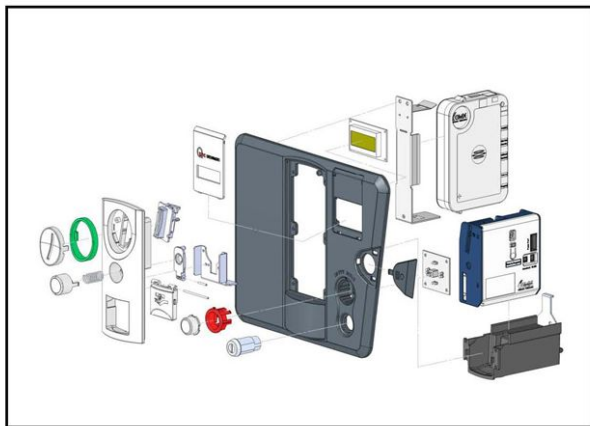
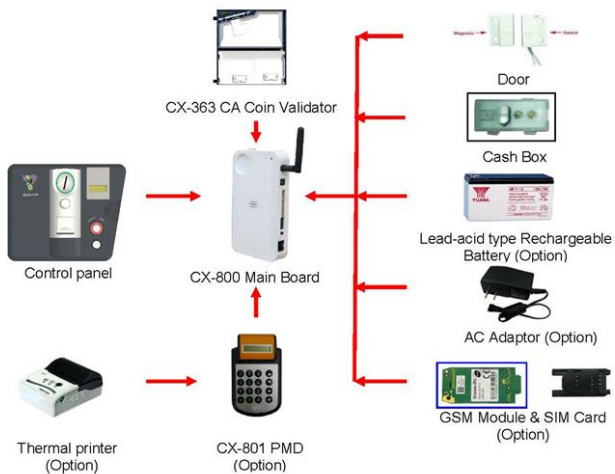
System Blocks Diagram

The CX-800 hardware requirements for operation as following:

- Control panel
- Coin validator (model CX-363CA)
- Main Board with shield casing
- 12V / 7.2A Lead-acid type rechargeable battery
- AC adaptor (DC 12V / 1.25A)(Option).

The following items are optional:

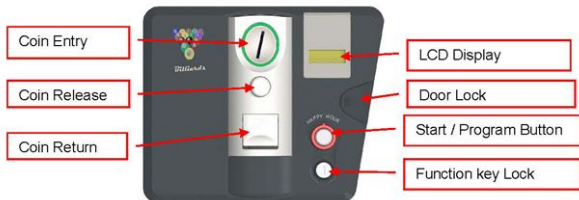
- PMD (Portable Management Device) can select to add portable thermal printer.
- RMS (Remote Management System) is via GSM modular and SIM card.



System of machine

The basic hardware requirements for operation of the CX-800 are:

- **CX-800 Control panel** (the photo to be a little bit large)



- Auto play and Discount (happy hour) selectable.
- 4 - Digit LCD displays.
- LCD credit display.
- Battery low LCD indicator.
- Happy hour LCD or LED indicator.
- Coin in sensor.
- Door sensor.

CX-800 Main Board

- Real time clock.
- Daylight savings support.
- Battery backup of stored game credits, excess cash credits and audit accumulators.
- Using GSM high quality EGSM/GPRS 900/1800/850/1900 quad - band module service and GSM 11.11 (small) SIM card. (Option for remote management system)
- Document to be detailed by CX-800 technical Manuel.



CX-363CA Coin Validator

- CX-363CA coin validator with low power consumption incorporating optical coin-in detection, coin validation circuit, anti coin string mechanism, driven solenoid and plastic run way for coin moving.
- When a coin-in event is registered, the validation will be powered up by the main board allowing coin acceptance.
- The CX-363 allows programming coin or token in total 8 different coin values.
- Document to be detailed by CX-363CA technical Manuel.



CX-800 Loom and switches

- Long life DC motor
- Light weight design
- Heavy duty plastic gearbox
- Continuous or intermittent duty
- Optional leads or connectors



CX-801 PMD Portable Management Device (Option)

- 16 character LCM Display with 4x4 Keys.
- Programmable price for play.
- Happy hour and premium price setting.
- Time output and pause programmable for motor control.
- Revenue display, or print out via printer.
- Document to be detailed by CX-801 technical Manual.



Thermal printer (Option)

- Light weight for true mobility.
- Pocket size 102 x 77 x 36 mm.
- Rechargeable Li-ion battery.(DC 7.4V, 1.5A)
- Weight 275g (Including battery & roll paper).
- Paper Width 57.5 ±0.5 mm.



12V / 7A Lead-acid type rechargeable battery

The 12V / 7A lead-acid batteries provide the power required for Billiards long time used.



12V / 1.25A DC adaptor

The external power adaptor supplies the lead-acid battery in charge requirement.



Technical Specifications

Size :

- PCB
 - Length 152 mm
 - Width 86 mm
 - Max. Height 22 mm
- Mounting holes (centre line to centre line)
 - Length 144.5 mm
 - Width 78.5 mm

Internal SIM Card (Optional) :

- Meet GSM 11.11 (small)

Power :

- Voltage (nom) 12Vdc to 15Vdc
- Standby - 10 mA with LCD display connected.
- Power up 17mA (5 sec per coin)
- Coin accept 100mA (110 mSec per coin)
- CX-801 PMD Portable Management Device 12 mA.
- GSM Board Device Average 12mA.

RF Power (Optional) :

- 850MHz / 900MHz 2W.
- 1800MHz / 1900MHz 1W.

DC Power adaptor (Optional) :

- Input: AC 100 ~ 240V / 50 ~ 60 Hz / 0.4A.
- Output: DC 12V / 1.25A.

Output :

- FET semiconductor output control
- Max current 1A at 12Vdc

Displays :

- 4 digit LCD display.
- LED indicator (fits in face plate)

Molon Motor :

- 12 RPM at 12 Vdc
- 80 mA at 12 Vdc