

Video router alpha[®] UMTS Video

For stationary or mobile video applications under extreme temperature conditions (-25 °C...+55 °C)



Video router alpha[®] UMTS Video

For stationary or mobile video applications under extreme temperature conditions (-25 °C...+55 °C)

alpha[®] UMTS Video is a video router with GPS functionality, designed for use under extreme temperature conditions, for connection of up to two analogue video cameras, for connection of up to two analogue video cameras. Modern compression methods, such as MPEG4 and H.264, permit the transmission of single frames or video streams via mobile radio network. The video parameters can be set via the web interface of the video router and the quality of the transmitted images is adapted to the conditions of the mobile communications network and the requirements of the user.

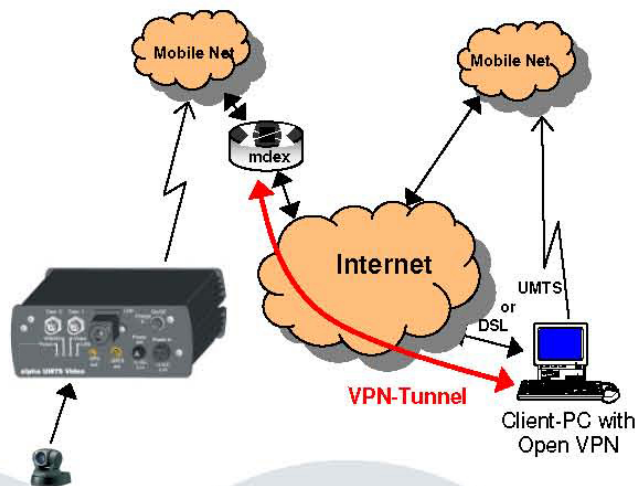
The video routers are installed in a robust IP54 outdoor housing.

Functionality

- Video transmission via UMTS / HSDPA / HSUPA / GPRS / EDGE
- Video compression MPEG4 / H.264
- Router service
- GPS
- Web interface for setting of:
 - video parameters
 - UMTS and access parameters
 - router parameters
- Update capability
- VPN functionality

Application

Video transmission via UMTS



Connections

- UMTS antenna
 - SMA
- GPS antenna
 - MCX
- Video FBAS-in
 - 2x BNC
- SIM
 - On-board socket

Status information

- Status displays (LED)

GPS

- NMEA 0183 over tcp (virtual serial port)

VPN

- OpenVPN client

RF features

- Quad-band GSM/GPRS/EDGE 850, 900, 1800, 1900 MHz
- UMTS WCDMA FDD 850, 1900, 2100 MHz

Packet mode features

- UMTS data rates 384 kbps downlink, 384 kbps uplink
- HSDPA data rate 3.6 Mbps downlink, 384 kbps uplink
- GPRS/EDGE Class B, Multislot class 10

Power supply

- $V_{cc} = 8-28$ VDC, $I_{max} = ca. 2,0$ A
- **alpha[®] UMTS Video EG** with external power supply unit

Versions

- **alpha[®] UMTS Video EG**
IP54 housing
Operating temperature -25 °C ... +55 °C